

MARKETING BULLETIN

REPAIRING DAMAGE/DEFECTS IN A 2-HOUR AREA SEPARATION WALL SYSTEM

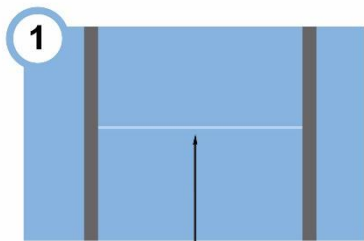
The 2-hour fire rated Area Separation Wall System was developed over 50 years ago as a way to economically protect from fire two (2) separate units in apartments, townhomes, condominiums and duplexes. At times during the installation of the ASW system, mistakes are made or damage occurs to this assembly - and for that reason American Gypsum performed a 2-hour full scale fire test per ASTM E119, with repairs to defects in this wall system. NOTE - only American Gypsum's 1" M-Bloc Shaft Liner and 1" M-Glass Shaft Liner panels are approved for use in fire test report - WFCi 19046.

Below you will find one of the defects that was built into American Gypsum's Area Separation Wall System (UL U375), and how to successfully repair it in the field to ensure that the 2-hour fire rating is preserved.

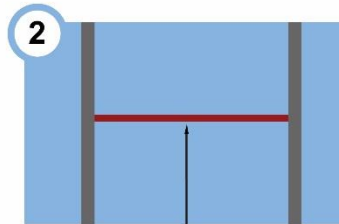
DAMAGE OR DEFECT:	HORIZONTAL JOINT IN SHAFT LINER PANELS
--------------------------	---

ISSUE: The 1" Shaft Liner panels are to be full size pieces within the ASW framing system (often 10' or 12' in length), but at times installers will mistakenly insert or use partial or not full size pieces. This practice is not in compliance with approved 2-hour fire rated ASW assemblies.

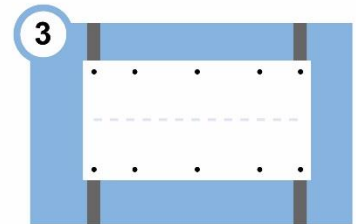
- REPAIR:**
- ❖ Fill the horizontal joint where the two (2) pieces of 1" Shaft Liner panels meet with 3M Fire Barrier Sealant CP 25 WB+ fire caulk
 - ❖ Center a piece of 5/8" FireBloc Type X wallboard over the horizontal joint (minimum 12" in height by cavity width), applying fire caulk to back of this drywall patch (form of a "X")
 - ❖ Attach corners of patch to metal H-studs with 1-1/4" drywall screws, and then along top and bottom edges of patch, apply 1-1/2" Type G laminating screws, 6" on center to secure drywall patch to Shaft Liner panel
 - ❖ Once in place, apply fire caulking around its perimeter



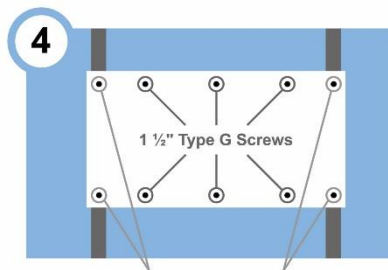
Horizontal joint in Shaft Liner panel, within H-Stub cavity



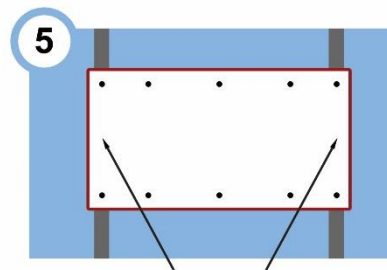
Fill horizontal joint with 3M Fire Barrier Sealant CP 25WB+ fire caulk



Center a piece of 5/8" FireBloc Type X wallboard over the horizontal Shaft Liner joint and secure as shown



1 1/4" Drywall Screws



Apply to perimeter of the drywall patch, 3M Fire Barrier Sealant CP 25WB+ fire caulk

THE PRODUCTS YOU NEED FROM THOSE YOU TRUST

FireBloc® | M-Bloc® | LightRoc® | M-Glass®

American Gypsum Company LLC
5960 Berkshire Lane, Suite 800, Dallas, TX 75225
(800) 545-6302

